

Chute Weigh User's Guide

Unpacking

1. Remove the product from the shipping box.
2. Cut the large cable ties that restrain the feet and the coil of cable during shipping. Do not cut the 7 small cable ties, as these are necessary for product protection while in use.

There should be two foot pads and two 3/8-16 x 2 1/4" bolts with each Chute Weigh beam. If anything is missing, please notify your dealer or Avery Weigh Tronix at 507-238-4461.

Installation

1. Attach the feet to the bar as shown in Figure 1. When properly tightened, the footpad bolt will not be tight against the weigh bar, there will be a gap of approximately 1/16" (see Figure 2). This allows the bar to bend properly during use – do not shorten bolt or use washers to fill the gap. Performance may be adversely affected.

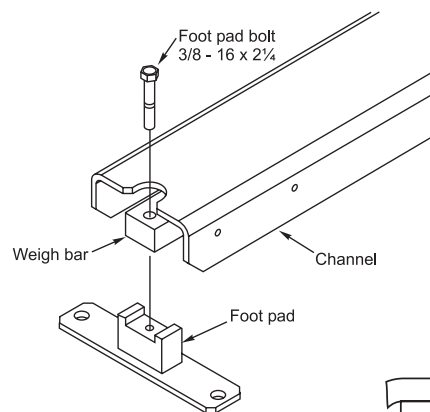


Figure 1

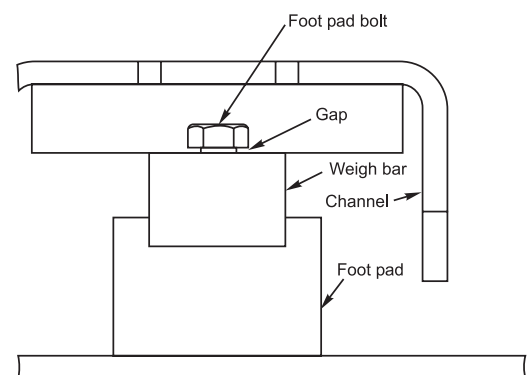


Figure 2

2. The feet should be attached to the concrete or other firm surface using 1/2" bolts. See Figure 5 for applicable mounting dimensions. Best scale accuracy is achieved when the surfaces being mounted to are firm and level. Shimming under the footpads may be needed to meet this requirement.

3. Attachment of the chute or deck platform to the channel may be accomplished in a number of ways.
- Existing holes can be used to bolt bracketing to the channel with 3/8" bolts. Additional holes may be drilled into the channel, but should be in line with the existing holes, 1 3/8" from the bottom of the channel leg. See Figure 3. A block should be temporarily placed between the channel and the weigh bar to protect the weigh bar from damage at drill bit break-through.

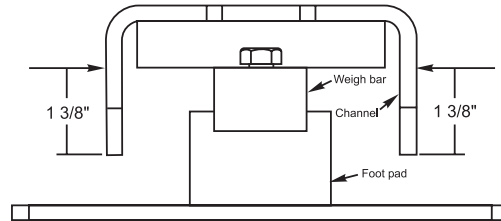


Figure 3

- Holes can also be drilled into the top of the channel if the holes are out-board of the chute or deck platform. A block should be temporarily placed between the channel and the weigh bar to protect the weigh bar from damage at drill bit break-through.
 - The least preferred method would be to weld directly to the channel. The preferred locations for the welding are the same locations mentioned for drilling holes. If welding is necessary, it is recommended to disassemble the weigh bar from the channel first.
4. The load-bearing capacity of each end of each bar is 2500 lbs., provided the load is applied to the last 12". This results in a capacity of 5000 lbs. per bar, and 10,000 lbs. for a set of two bars. If load will be applied directly to the middle 20" of the bars, the load must be limited to 3000 lbs. per bar (6000 lbs. for a set of two). See Figure 4.

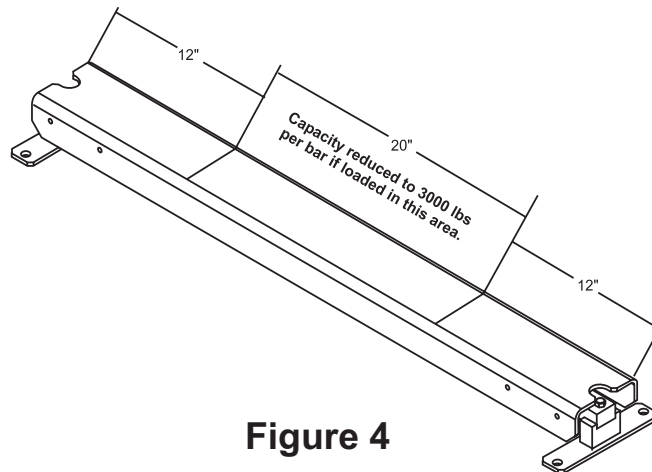


Figure 4

Dimensions

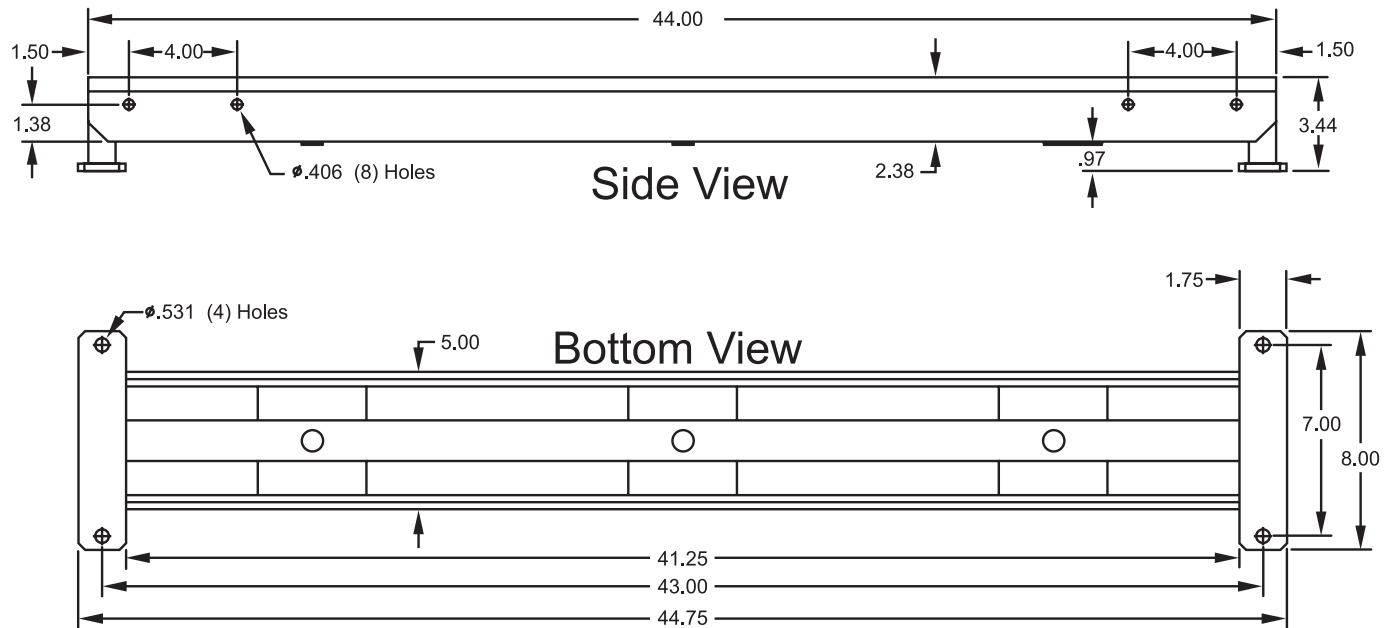


Figure 5

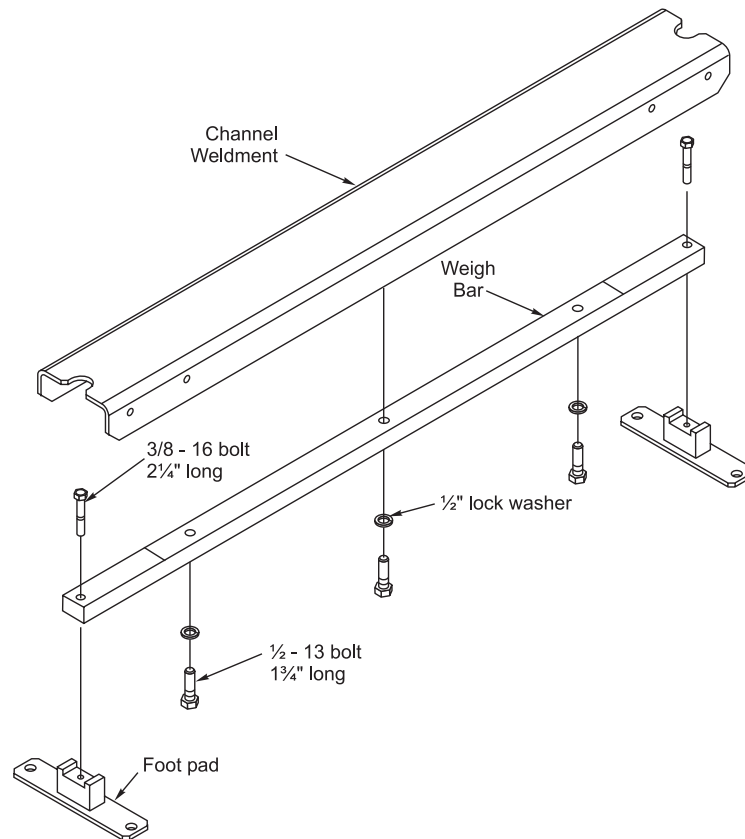
Maintaining the Scale

1. Protect the cables from damage. The cables should be routed to the indicator in a manner which minimizes the chance of damage.
2. Never pressure wash the Weigh Bar.
3. Do not allow mud, manure, etc. to build up under the Chute Weigh. Buildup can prevent the deflection necessary for accurate scale performance.
4. Periodically check that all hardware is properly tightened.

Troubleshooting

- Improper weight readings.
 - Incorrect codes in indicator.
 - Calibration or adjustment to calibration is needed.
 - Debris or buildup is under the scale or between the Weigh Bar and channel.
 - Scale cables have been damaged.
- Unstable readings on the scale indicator
 - Scale cables are not securely plugged into indicator.
 - Scale cables have been damaged.
 - Moisture in the Weigh Bar cable connectors.
 - Weigh Bar damage or failure.
- Display doesn't change as weight is added.
 - Debris or buildup is under the scale or between the Weigh Bar and channel.
 - Scale cables not securely plugged into indicator.
 - Scale cables have been damaged.
 - Weigh Bar damage or failure.

Exploded View and Parts List



Description	Weigh-Tronix Part Number	Quantity
Complete Chute Weigh beam	57353-0011	
Channel Weldment	57352-0012	1
Footpad Weldment	57349-0018	2
Weigh Bar	57345-0012	1
1/2"-13 Bolt, 1 3/4" long	14476-0543	3
1/2" Lock Washer	14474-0107	3
3/8"-16 Bolt, 2 1/4" long	14494-0335	2

Avery Weigh-Tronix
 1000 Armstrong Dr.
 Fairmont, MN 56031 USA
 Telephone: 507-238-4461
 Facsimile: 507-238-8283
 e-mail: ag@weigh-tronix.com
www.agscales.com



Avery Weigh-Tronix
 SCALES FOR AGRIBUSINESS